



# ORAPI

CLEAN & PROTECT TOGETHER



## Automotive Refinishing: **GRAMOS ESSENTIALS**



In Partnership With

 **EGUCHI IWAO**



# ORAPI

CLEAN & PROTECT TOGETHER

## WHO WE ARE

---



## Since 1968, the Orapi group has been a trusted partner to manufacturers across the world.

Over the last 50 years, the Orapi Group has grown in harmony with its customers and has devoted itself to providing the highest levels of service and quality.

Our four Research and Development Centres and seven Production Facilities around the world have enabled us to remain at the forefront of industrial advances, ensuring that our customers always benefit from the highest quality of products and the latest industry breakthroughs.

### GRAMOS joins the Orapi family

Having acquired the GRAMOS brand in 2007, Orapi Applied has become a key partner in the market sector of Paint Shop Processes.

We now offer a full range of specialist chemical solutions and dust control products to assist in achieving the optimal paint finish, including for large OEMs, such as VW, Audi, BMW, Jaguar Land Rover, Toyota, Volvo, JCB, and many more worldwide.

Our commitment to quality, performance, and sustainability has also solidified our position as a trusted partner to Tier 1 manufacturers.

## KEY PARTNERSHIP WITH EGUCHI IWAO

From flawless paint finishes to coatings that provide unbeatable protection, Eguchi Iwao's reputation for excellence is well-deserved. Likewise, Orapi's expertise in chemical manufacturing spans multiple decades, marked by a commitment to environmental sustainability, quality, and efficiency.

The partnership between Orapi and Eguchi Iwao, therefore, will deliver a comprehensive suite of solutions that caters to every aspect of refinishing and beyond.

Orapi's extensive expertise in chemical formulations and dust control products will enhance Eguchi Iwao's refinishing solutions, offering a holistic approach to parts maintenance. With a focus on quality, efficiency, and sustainability, this partnership will set new industry benchmarks while ensuring cleaner, safer, and more productive work environments.



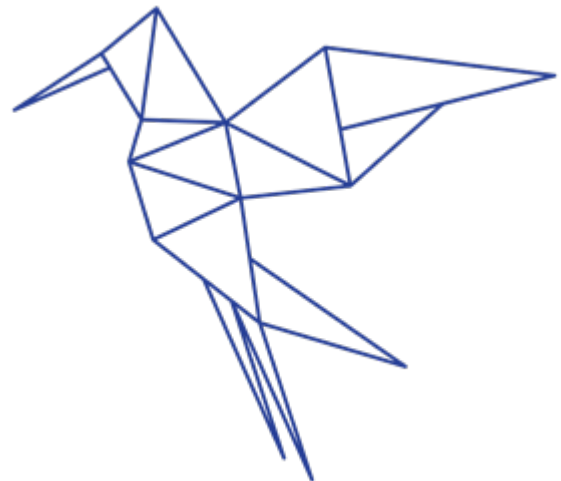
# WHO ARE EGUCHI IWAO



**"Established in 1907, Eguchi Iwao has grown to become Japan's premier provider of paints, coatings, and specialty materials. After 18 successful years of expansion across Asia, the company ventured into Europe, inaugurating Eguchi Iwao Europe (EIE) in the UK in September 2019.**

The company's operations in Japan and Europe are closely associated with several major global coatings manufacturers. These partnerships have enabled the company to consistently deliver advanced paint products and solutions, building a strong reputation for reliability and quality.

In keeping with this legacy, Eguchi Iwao Europe prides itself on sourcing and working with innovative companies like that strive for excellence in their fields. This is why they work with brands like Orapi and extend their services to additional business sectors across Europe.



**DUST CONTROL**

Page 3

**WATER TREATMENT**

Page 6

**PROTECTIVE COATINGS**

Page 9

**SURFACE CLEANING**

Page 12

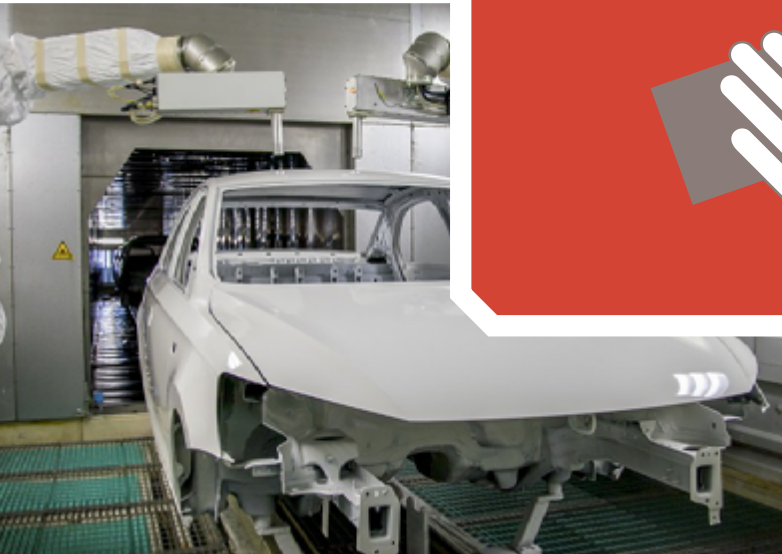
**METAL PRE-TREATMENT**

Page 14





# DUST CONTROL



Dust, fibres and grit particles are a major source of paint defects causing nibs, rough finishes, imperfections and points of weakness and corrosion.

GRAMOS originally designed the TAK®rag over 50 years ago, and remains a trusted partner in the pursuit of flawless finishes and impeccable quality.

We understand that in the rigorous world of assembly lines, achieving pristine surfaces is both an art and a science, meaning our DUST CONTROL products are meticulously designed to ensure surfaces are immaculately dust-free before the first spray of paint ever touches them.

With Gramos Dust Control products, you can expect nothing less than the following:

**Precision Dust Removal:** Our TAK® products leave no room for dust particles, ensuring a canvas that's impeccably clean, ready for painting.

**Uncompromising Quality:** All Gramos products are manufactured to the highest quality standards, enabling you to consistently deliver products that stand out for craftsmanship and aesthetics.

**Astute Cost Savings:** Save substantially on rework and materials, optimising your bottom line without compromising on quality.



## WOVEN COTTON TAK®rags

### THE ORIGINAL TAK®rag

#### MEDIUM TACK

The original TAK®rag is a general purpose TAK®rag used in any area for the removal of dust contamination. Different sizes and packaging are available to suit the individual and bulk user needs. Also available are larger sizes for maximum area coverage. The original TAK®rag is an ideal tool in the fight against contamination.



10 x 50	D3009-10X50	Bulk pack
20 x 10	D3023-20X10	Individually wrapped
50 x 1	D3023-50X1	Individually wrapped with dispenser

## NON WOVEN TAK®rags

### maxaTAK®

#### MEDIUM TACK, TEXTURED COTTON

This is a large TAK®rag with superior dust holding capacity. It is made from textured cotton, which gives it its soft, high bulk nature. Ideal for large surface areas or high levels of dust.

25 x 1	D3033-25X1	Individually wrapped
2 x 50	D3002-2X50	Bulk Pack

### ultraTAK®

#### LIGHT-MEDIUM TACK

UltraTAK® is made from an ultra soft white non-woven fabric which gives it a high snag resistant quality. Ideal for uneven surfaces and developed for use with water-based paint systems.

50 x 1	D3055-50X1	Individually wrapped with dispenser
20 x 10	D3055-20x10	Clamshell

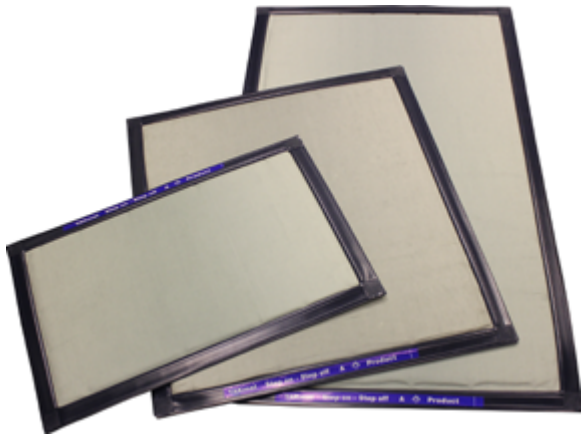
## COMING SOON

### BLACK TAK®RAGS

The black TAK®rag is a new product we have developed to improve the visibility of light coloured dust and contamination on the rag, making them ideal for working with clear coat. The contrast helps to prevent both unnecessary wastage and overuse.



# TAK®mats



## SDA TAK®mats

### SUPER DUST ABSORBANT

Super Dust Absorbent TAK®mats have 36 resin impregnated cotton covers enclosed in a heavy duty plastic frame with a super dust absorbent cushion foam interior. Top layer can be removed when soiled, to reveal a clean layer.

61 x 91cm D3305-2X1 2 Mats (SDA3)

104 x 91cm D3304-2X1 2 Mats (SDA2)

152 x 91cm D3303-1 1 Mat (SDA1)

## IMPREGNATED WIPES

### DG WIPES

#### LOW V.O.C, DEGREASING WIPES

Low lint, low VOC aqueous degreasing wipes for all degreasing applications. Resealable packs, high quality fabric.

10 x 25 D3084-10X25 Bulk pack

### MICROWIPE AS

#### ULTRA LOW V.O.C

Lint free non-woven microfibre fabric impregnated with a fast evaporating, anti static, ultra-low VOC level degreasing liquid. Ideal for cleaning and surface preparation of both metals and plastics prior to secondary operations. Available with standard and light impregnation levels.

10 x 25 D3086F-1X10X25 Bulk pack (standard)

10 x 25 D3087-1X10X25 Bulk pack (light)

### PLASTIC COMPONENT WIPES

#### ANTI-STATIC, LOW VOC, DEGREASING

A water-based impregnation which provides a powerful cleaning action whilst also optimising evaporation rates and an ultra-low VOC level. An additional benefit is the Anti-static agent within the impregnation which eliminates surface static build up. The non-flammable nature ensures safety in use and ease of storage.

1 x 800 D3089-800 Dispensing tub

## COMING SOON

### IPA WIPES

#### HIGH PERFORMANCE, NON-LINTING

Pre-impregnated, ready to use wet wipes designed for quick, easy cleaning of hard surfaces. They feature a strong tear resistant fabric and a powerful alcohol based impregnant that penetrates and breaks down contaminants before rapidly evaporating to leave a clean, residue free finish.





# WATER TREATMENT

## 1. Applying surface finishes

Applying surface finishes is a messy business. Lacquers, paints, enamels and adhesives create soil and contamination, readily attaching to the fabric of the paint shop. Properly maintained spray booths will considerably reduce lost time and improve booth efficiency leading to increased productivity.

## 2. Containing overspray

How do you contain overspray? Adding a solution from the TAK®kill Denaturant range to your spray booth water system rapidly “de-tackifies” the paint overspray ensuring that it is denatured to the required degree and is floated or sunk for removal according to the design features of the booth.

## 3. Why Use GRAMOS Water Treatment

- Increase booth efficiency by reducing down time
- Stops paint re-depositing within the booth
- Prevents sticky blockage of pumps and nozzles
- Removal of overspray solids made easier
- Biocide prevents odour causing bacteria
- Health and Safety conformance
- Reduce disposal costs
- Less frequent clean out / sludge disposal



## TAK®kill DENATURANTS

### TAK®kill DENATURANT GP

#### OVER-SPRAY WATER TREATMENT

TAK®kill Denaturant GP is a liquid preparation consisting of a solution of alkalis, formulated for use as an additive for spray booth water treatment. Due to the fact that TAK®kill Denaturant GP is a liquid, the disadvantages associated with dissolving powder alternatives are eliminated.

TAK®kill Denaturant GP has been designed for the treatment of over-spray paint in paint spray booths, particularly of the conventional pump type. Reaction between the over-spray paint and the TAK®kill Denaturant GP solution in the spray booth will mean less frequent cleaning and the treated paint will float in a convenient denatured non-sticky form for easy removal.

25L    B4712-25    Drum



### TAK®kill DENATURANT FM

#### OVER-SPRAY WATER TREATMENT

Spray booth additive TAK®kill Denaturant FM has been developed for the treatment of paint over-spray especially in pumpless spray booths. TAK®kill Denaturant FM is neutral in reaction and is able to denature paints that are largely unaffected by alkaline additives.

25L    D4704-25    Drum





## TAK®kill ADDITIVES

### TAK®kill AF

#### ANTI-FOAM

TAK®kill AF is a creamy emulsion blend of complex anti-foam agents in a highly refined mineral oil.

This silicone-free, highly efficient, foam-control agent is particularly suitable for use in the water of paint spray booths. It is especially effective in reducing foam created by over-spray of water-borne paints into the booth's water recirculation systems. It can also be used with solvent based paints being denatured in high pH alkaline water treatment solutions.

20KG D8805-20 Drum

### TAK®kill ADDITIVE BC1

#### BACTERICIDE

TAK®kill Additive BC is a blue/green liquid particularly suitable for the elimination of offensive odours caused by bacteria in the water of water-wash paint spray booths.

It must be used in conjunction with the normal spray booth compounds used to denature the paint.

25L C8705-25 Drum



## POLYELECTROLYTES

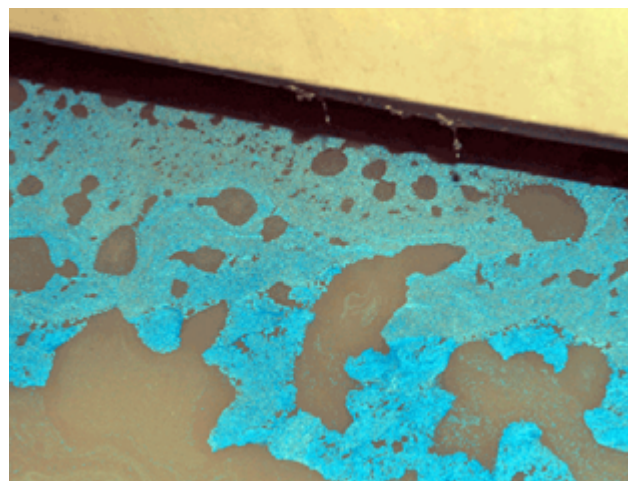
### TAK®kill ADDITIVE P.E.L.

#### POLYELECTROLYTE (RED)

TAK®kill Additive P.E.L. is a high-viscosity, viscous red liquid, developed in line with our continued policy of research and improvement, to offer polymer technology, which aids separation of solids from water systems such as paint spray booths. The flocculants and coagulating agent allows the solids to separate from the water and be removed in whatever means has been designed such as flotation and skimming systems or settlement tanks.

This helps save time and money on disposal of waste. The TAK®kill P.E.L. is normally used in conjunction with other TAK®kill Denaturant products which remove the tackiness of the resins prior to separation and removal.

25L D4702-25 Drum





# PROTECTIVE COATINGS



Overspray, airborne dust and general grime collects on all booth surfaces.

Removal of this contamination is labour intensive and time consuming, while neglecting the booth will cause an increase in rejects and rework as dust and particles attach to everything.

Orapi manufactures a range of protective coatings designed specifically for booth maintenance. Easy to apply and simple to remove, they allow faster clean downs and increased protection.

## Peelable Coatings

Protective coatings to suit all booth surfaces and applications, including walls, floors, windows and lights—solvent based for fast-curing or water based for sensitive applications. Applied by spray, brush or roller, the products dry to a semi-permanent smooth bright film enhancing the condition of the spray booth.

When it is time to remove, simply peel from the surface, dispose and re-apply a fresh coating. Peelable coatings are also suitable for temporary surface protection within multiple manufacturing processes, protecting finished surfaces during handling, storage and delivery.

## Tacky Surface Coatings

Tacky coatings are a water based solution for airborne dust within painting and process applications, once applied the film does not completely dry and remains tacky to the touch.

Airborne dust is attracted to the coating and is contained on the surface greatly assisting in keeping the area free from airborne contamination. Available in liquid, gel and paste formats with solutions for heavy duty and high temperature applications. Tacky coatings are easily washed off with water.

## SOLVENT BASED PEELABLE COATINGS

### PROPEEL HS

#### HEAT-STABILISED

Propeel HS is a white, heat-stabilised, solvent-based temporary protective coating designed for application to all smooth metal spray booth walls in order to provide an easy method of maintenance. It can withstand exposure to temperatures up to 83 deg C. Resistant to solvents once dry. The dried film collects paint over-spray and is then readily peelable to enable even heavy over-spray deposits to be quickly and easily removed.

4 x 5L	G4603-4X5	Container
25L	G4603-25	Drum

### PROPEEL CL

#### SEMI-CLEAR

Propeel CL is a solvent-based, semi-clear, temporary, protective coating designed for application to glass, light fittings and other surfaces that require good visibility. Resistant to solvents once dry. This peelable provides an easy method of maintenance as the dried film collects paint over-spray and is then readily peelable enabling over-spray deposits to be quickly and cleanly removed.

25L	G4604-25	Drum
-----	----------	------

### PROPEEL HD

#### HEAVY DUTY

Propeel HD is a heavy-duty, viscous liquid which dries to leave an off-white, tough, peelable film. It offers a simple yet effective method of maintaining and protecting non-solvent-sensitive floors and other surfaces from abrasion, paints, oils, resins, and dilute acids and alkalis. Applied correctly this peelable protector will even withstand forklift trucks.

25L	G4600-25	Drum
-----	----------	------



## WATER BASED PEELABLE COATINGS

### AQUAPEEL

#### STANDARD

Aquapeel is a white, water-based, temporary coating designed for application to smooth, clean metal walls in order to provide an easy method of maintenance. The dried film collects paint over-spray and contamination and is readily peelable to enable even heavy over-spray deposits to be quickly and cleanly removed.

4 x 5L	A4605-4X5	Container
25L	A4605-25	Drum

### AQUAPEEL TS

#### TRANSPARENT

Aquapeel TS is a water-based, transparent, temporary protective coating designed for application to glass, light fittings and other surfaces that require good through visibility. This peelable provides an easy method of maintenance as the dried film collects paint over-spray and is then readily peelable enabling over-spray deposits to be quickly and cleanly removed.

25L	D4608-25	Drum
-----	----------	------



## TACKY SURFACE COATINGS

### TACKY SURFACE COATING

#### REMOVES AIRBORNE PARTICLES

Tacky Surface Coating is a water-based solution specially formulated for application to painted spray booth walls. The film does not completely dry out at ambient temperatures and its tacky surface collects and holds dust thus greatly assisting in keeping the spray booth area free from airborne particles which can be detrimental to the finished article. Once contaminated the coating can be easily washed off with water.

4 x 5L	A4512-4X5	Container
25L	A4512-25	Drum

### OVEN COAT WR HT

#### HIGH TEMPERATURE, HIGH TACK

The applied coating converts to a highly effective tacky dust collecting surface, that will withstand high oven temperatures (up to 165°C) for prolonged periods.

25L	D4531-25	Drum
-----	----------	------

## PROPEEL THINNER

### PROPEEL THINNER

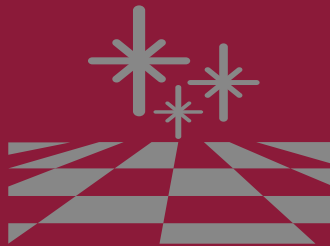
#### REDUCES DRY SPRAY

Corners and high reach areas often experience DRY SPRAY, where the solvent in your Propeel paint flashes off before reaching the surface, causing inconsistent or suboptimal coverage. Add 5% of the Propeel Thinner to your Propeel Coating to ensure those hard to reach surfaces achieve a consistent protective barrier.

4 x 5L	G4161-4x5	Container
25L	G4161-1x25	Drum



# SURFACE CLEANING



Cleanliness and preparation play a critical role in achieving flawless finishes. That's why we've developed an essential range of surface cleaning products designed to meet your diverse needs.

Whether you're tackling routine maintenance or tackling tough industrial cleaning challenges, our products are tailored to deliver exceptional results.

## **Versatility for Every Task:**

From low-hazard products ideal for general cleaning to industrial-strength cleaners formulated to conquer the toughest soiling, our Essential product lineup has you covered.

## **Ease of Application:**

One of the hallmarks of our Surface Cleaning products is their user-friendly application. Whether you prefer the precision of hand application, the convenience of a brush, the power of a pressure washer, or the efficiency of a floor scrubbing machine, our products are designed to work seamlessly with your chosen method.

## **Uncompromising Quality:**

Orapi's commitment to quality ensures our Essentials products are not only effective but also safe for your workforce and the environment. You can trust our products to deliver superior cleaning power without compromising on safety.



## HARD SURFACE CLEANERS

### AQUABOOST LOW FOAM

#### ALKALINE CLEANER CONCENTRATE

Aquaboost is a highly concentrated liquid cleaner, designed for the cleaning of industrial floors. It will rapidly remove oils, greases and general soiling from floors and other hard surfaces. When used in conjunction with floor scrubbing machines, the low foam nature of the product promotes the easy rinsing of the floor leaving minimal detergent residues.

25L	B7903-25	Drum
-----	----------	------

205L	B7903-205	Barrel
------	-----------	--------

1000L	B7903-1000	IBC
-------	------------	-----

### G850

#### GENERAL PURPOSE CLEANER

G850 is a powerful concentrated cleaner used for the rapid removal of grease and contamination from surfaces. An ingenious formulation allows G850 to tackle a wide range of duties from heavy duty contamination to light soiling.

2 x 5L	A1220-2X5	Container
--------	-----------	-----------

25L	A1220-25	Drum
-----	----------	------

205L	A1220-205	Barrel
------	-----------	--------

1000L	A1220-1000	IBC
-------	------------	-----

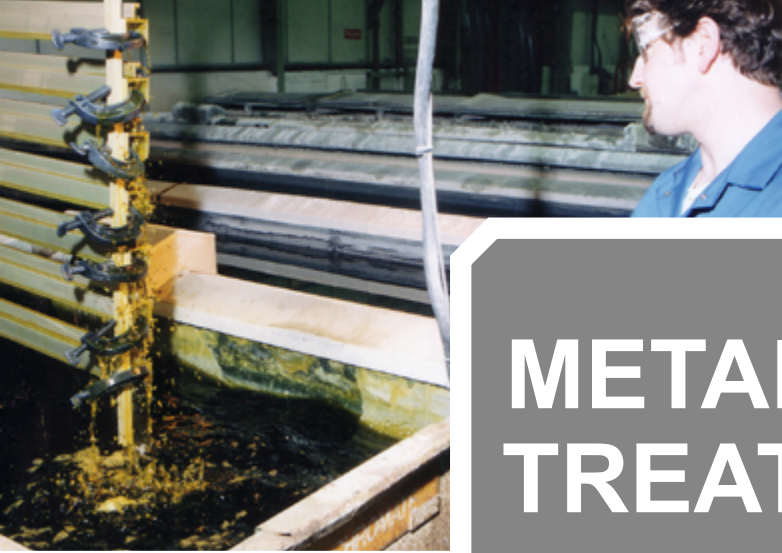
### GLASS CLEANER

#### GLASS CLEANER

Glass Cleaner is a sophisticated blend of solvents and detergent specifically formulated for cleaning glass and other hard surfaces where a streak free finish is essential. The product cleans a wide variety of soils. It is suitable for use on all glass, stainless steel, chrome, ceramic, laminate and most plastics.

6 x 500ml	D7111K-6X500	Trigger Spray
-----------	--------------	---------------

2 x 5L	D7111D-2X5	Container
--------	------------	-----------



# METAL PRE-TREATMENT



For over 50 years, GRAMOS has been at the forefront of manufacturing metal cleaning, finishing, and surface control solutions for industrial pre-treatment processes, providing a wealth of knowledge and unparalleled depth of expertise.

Our Essential product range is complemented by our dedicated technical support team, ready to tailor chemical dosing systems, provide on-site services, and conduct lab testing to meet your specific needs (subject to agreement).

### PHOSPHATING: WHAT IS IT?

Phosphating relates to the conversion coating process that produces a uniform, very thin layer of metal Phosphate on the surface of a metal component. The resultant metal Phosphate surfaces

are formed for various reasons; these include improved paint and plastic coating adhesion, corrosion protection and increased lubrication prior to metal drawing operations.

Phosphating works best when the surface of the metal is clean of any contamination. Therefore, a de-oxidising or degreasing operation is often required prior to the Phosphating process to remove any oxide layers, oils and greases.

Our iron phosphate, zinc phosphate, or dry in place systems provide a superior conversion coating on ferrous and non-ferrous metal surfaces prior to painting. Use of these processes and final rinse additives increases the corrosion resistance of the metal surface and enhances paint adhesion properties.



# PHOSPHATING

## METFIN IP3510

### LANCE APPLICATION CLEANER COATER

METFIN IP3510 is a liquid iron phosphating solution designed to clean and conversion coat steel, aluminium and zinc. METFIN® IP3510 is formulated to be applied by a hand held spray lance technique.

The powerful cleaning action and subsequent formation of an amorphous iron phosphate coating provides for excellent paint adhesion and increased corrosion resistance of painted components.

25L	C3510-25	Drum
205L	C3510-205	Barrel
1000L	C3510-1000	IBC



## NEW

## PHOSPHATE WIPE

### PHOSPHATE WIPES

#### IRON PHOSPHATE PRE-TREATMENT

Ready to use wet wipe, designed to quickly and effortlessly impart high performance iron phosphate coatings to ferrous metal components.

They combine a high quality, non-linting wipe with a specially designed treatment solution, which dries to form a high quality phosphate coating.

Phosphate Wipes are typically used where conventional phosphating processes are not available or difficult to apply.

10 x 25 D3519-10X25 bulk pack





# WHY USE EGUCHI IWAO?

We engage with paint manufacturers, automotive plants, independent producers or industry representatives in order to create a functional working experience for our customers through these relationships.

We will always guide you through choosing the best brands and products that satisfy your requirements, find application solutions in accordance with your process layout and environmental rules and troubleshoot any issue that may arise, ensuring collective growth and improvement.



**PRODUCT SOURCING**

**PROCESS IMPROVEMENT PROGRAMS**

**COST REDUCTION**

**INVENTORY MANAGEMENT AND SUPPLY**

**QUALITY ASSURANCE**

**TECHNICAL TRAINING**

**COMMERCIAL ANALYSIS & REPORTING**

**WASTE MANAGEMENT**

**CONSULTING SERVICES**





### Eguchi Iwao Europe

Banbury Office  
Suite 4, The Granary, Upton Estate  
Home Farm Drive, Banbury,  
Oxfordshire,  
OX15 6HU  
[orders@eguchi-iwao.com](mailto:orders@eguchi-iwao.com)  
[+44 \(0\) 3301 289 258](tel:+44(0)3301289258)

### Eguchi Iwao South Africa

Johannesburg Office  
Unit 12 Dawn Park,  
5 Tugela Road,  
Pomona,  
Kempton Park, 1619  
[info@eguchi.co.za](mailto:info@eguchi.co.za)  
[+27 \(0\)11 396 1161](tel:+27(0)113961161)

### Eguchi Iwao Europe

Warehouse Unit 5-1  
Orchard Farm Nursery,  
Tysoe Rd, Lower Tysoe, Warwickshire,  
CV35 0BU  
Warehouse [orders@eguchi-iwao.com](mailto:orders@eguchi-iwao.com)  
[+44 \(0\) 3301 289 258](tel:+44(0)3301289258)

### 360 Supply Solutions

Unit 12 Dawn Park, 5  
Tugela Road, Pomona,  
Kempton Park, 1619  
[admin@360ss.co.za](mailto:admin@360ss.co.za)  
[+27 \(0\) 11 396 1161](tel:+27(0)113961161)

### Woodfinishes

Unit 19B, Sea King Road,  
Lynx Industrial Trading Estate Yeovil  
BA20 2NZ  
[info@woodfinishes-ltd.co.uk](mailto:info@woodfinishes-ltd.co.uk)  
[+44 1935 432 841](tel:+441935432841)

### Eguchi Iwao South Africa

Durban Office  
Unit G2, 20/24 Outer Circuit Road,  
Isipingo, Prospecton,  
Durban, 4110  
South Africa  
[info@eguchi.co.za](mailto:info@eguchi.co.za)  
[+27 \(0\) 319 130 600](tel:+27(0)319130600)

