

KROMAVIS

**EGUCHI IWAO**  
**EUROPE** Ltd

CATALOGUE



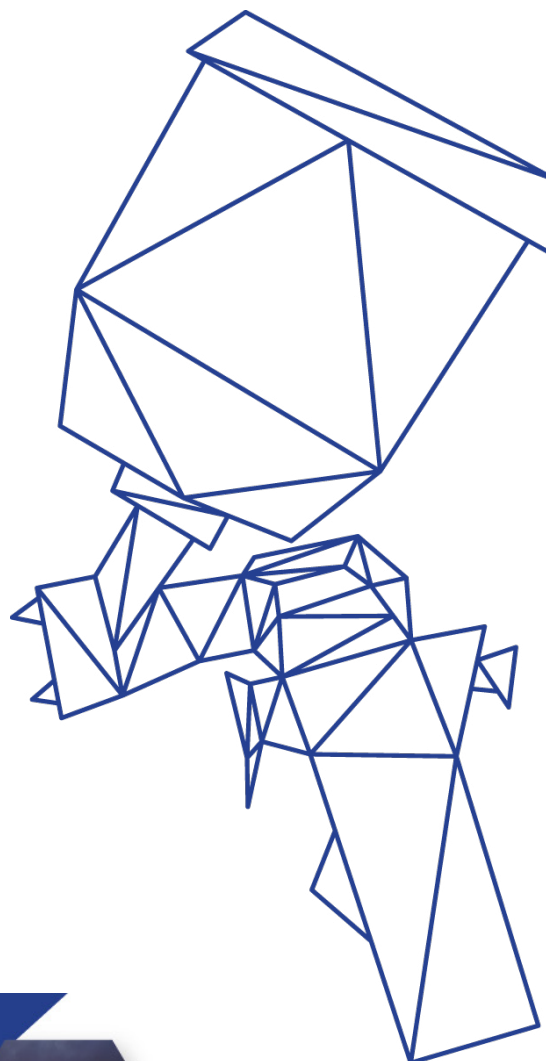


# WHO ARE EGUCHI IWAO

Founded in 1907, this company has evolved into a leading provider of paints, coatings, and specialty materials in Japan. After 18 years of successful growth across Asia, Eguchi Iwao South Africa was established in 2012, followed by the inauguration of a European branch in the UK in September 2019.

The company's operations in Japan and Europe are closely associated with several major global coatings manufacturers. These partnerships have enabled the company to consistently deliver advanced paint products and solutions, building a strong reputation for reliability and quality.

The European division is committed to maintaining this standard of excellence. It collaborates with innovative companies known for their expertise in the industry, like Kovax, and has expanded its services to cover additional business sectors throughout Europe.

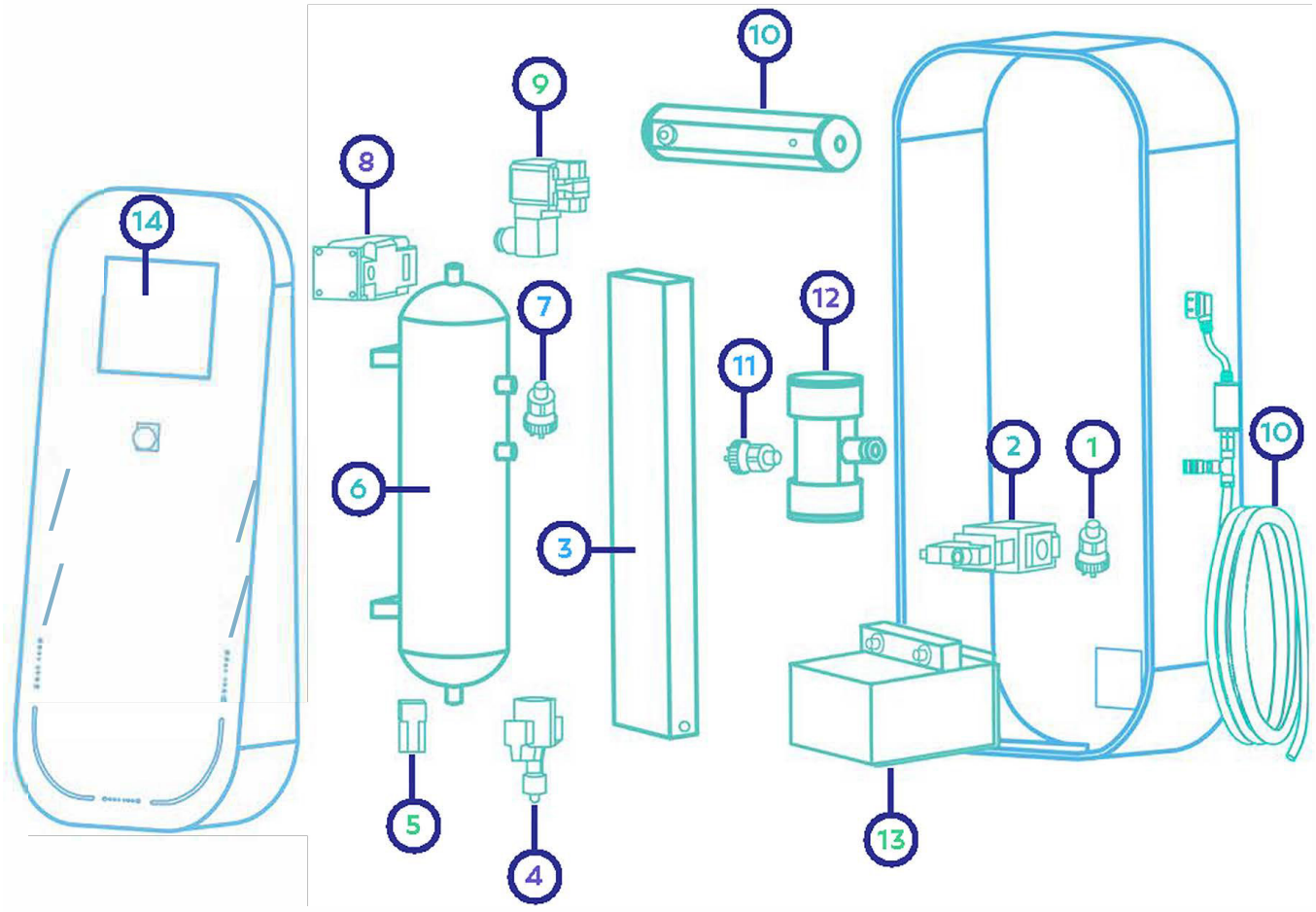


**COATINGS & SOLUTIONS**  
TOGETHER WITH  
SERVICE & SOLUTIONS



いつでも時間通りに納入します





## LEGEND

1. Inlet Pressure Sensor
2. Inlet Valve
3. Membrane
4. Volume Valve
5. One Way Valve
6. Tank
7. Tank Pressure Sensor
8. Pressure Regulator
9. Outlet Valve
10. Heater
11. Outlet Pressure Sensor
12. Ionization
13. Cooling System
14. Industrial PC





## Technical Details

1. **INLET PRESSURE SENSOR:** Measures the pressure passing from the compressor to the machine.

2. **INLET VALVE:** Under optimum conditions, the inlet valve opens and activates the air intake into the membrane.

3. **MEMBRANE:** The size of the membranes used in the machines determines the main model of the machine. Compressor air is supplied to its inlet. At the exit of the membrane, 99% nitrogen is obtained by gas separation.

4. **VOLUME VALVE:** It is used to adjust the flow rate of the gas passing out of the membrane and for adjustment of nitrogen purity.

5. **ONE WAY VALVE:** This valve has one-way permeability, thanks that the gas inside the tank is preserved even if there is negative pressure.

6. **TANK:** It provides the storage of nitrogen taken from the membrane. Even if the inlet pressure fluctuates, there is no fluctuation in the output of the machine thanks to the nitrogen in the tank.

7. **TANK PRESSURE SENSOR:** It measures the pressure inside the tank. In this way, it is understood whether the tank is full or not.

8. **PRESSURE REGULATOR:** It allows the gas before it to be regulated, according to that it can adjust the application pressure.

9. **OUTLET VALVE:** It is activated when the machine starts, unless there is an alarm that will adversely affect the process. The purpose of use is security.

10. **HEATER:** The purpose of the heater is to increase the temperature of the discharged gas and increase its speed, accordingly the application pressure is reduced.

11. **OUTLET PRESSURE SENSOR:** It is used to measure the pressure at the machine output. It serves to detect any hose cut situation at the machine output.

12. **IONIZATION:** It provides static electricity to the gas coming out of the end of the machine. The ionization system can charge the air with positive or negative ions, controllable on the user interface. The charge level can be adjusted between +25kV and -25kV.

13. **COOLING SYSTEM:** The cooling system is designed to cool the nitrogen produced by the machine to the desired temperature. The nitrogen passing through the heat exchanger is also cooled. Can cool up to +4 degrees up to 300-3000 lt/min. The sensitivity of the system is  $\pm 3C$ .

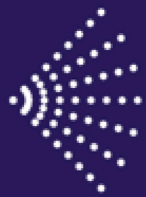
14. **INDUSTRIAL PC:** LAN connection programmed for 4.0 Industry, Remote Control, Remote Assistance





Optimization of the painting process

**Minimize coating defects and significantly improve transfer efficiency**



**10-30%**  
Paint Saving



**20-50%**  
Time Saving



**10-50%**  
Less VOC Emissions



**100%**  
Quality





# NITROWISE 150

## Smart



### PERFORMANCE:

Pressure (BAR)	Nitrogen production [m3/h]	Air consumption [m3/h]
6	5.3	13.7
7	6.4	16
8	7.5	18.3

### DIMENSIONS:

Width	cm	*70
Depth	cm	56
Height	cm	164
Weight	kg	200

\*This dimension do not include the external filters and the heating pipe

Power Consumption	1.2kW
Rated Volatege	230V

Nitrowise pipe allows to heat up the flow up 70°C  
Ionizator allows to charge the flow up 25kV

### CONNECTIONS:

- Inlet size 1/2" Female
- Outlet size 13mm (rubber pipe 13-19mm)
- Electrical connection with Type F plug (Schuko plug)
- LAN port

### MAINTENANCE:

Each 4.000 hours or yearly filter substitution is required.





# NITROWISE 300



## PERFORMANCE:

Pressure (BAR)	Nitrogen production [m3/h]	Air consumption [m3/h]
6	12.8	33.3
7	14.9	38.8
8	17.1	44.4

## DIMENSIONS:

Width	cm	*80
Depth	cm	65
Height	cm	194
Weight	kg	270

\*This dimension do not include the external filters and the heating pipe

Power Consumption	1.2kW
Rated Volatege	230V
Frequency	50Hz

Nitrowise pipe allows to heat up the flow up 70°C  
 Ionizator allows to charge the flow up 25kV

## CONNECTIONS:

- Inlet size 1/2" Female
- Outlet size 13mm (rubber pipe 13-19mm)
- Electrical connection with Type F plug (Schuko plug)
- LAN port

## MAINTENANCE:

Each 4.000 hours or yearly filter substitution is required.







# NITROWISE 1000



## PERFORMANCE:

Pressure (BAR)	Nitrogen production [m3/h]	Air consumption [m3/h]
6	12.8	33.3
7	14.9	38.8
8	17.1	44.4

## DIMENSIONS:

Width	cm	*80
Depth	cm	65
Height	cm	194
Weight	kg	270

\*This dimension do not include the external filters and the heating pipe

Power Consumption	1.2kW
Rated Volatege	230V
Frequency	50Hz

Nitrowise pipe allows to heat up the flow up 70°C  
Ionizator allows to charge the flow up 25kV

## CONNECTIONS:

- Inlet size 3/4" Female
- Outlet size 13mm (rubber pipe 13-19mm)
- Electrical connection with Type F plug (Schuko plug)
- LAN port

## MAINTENANCE:

Each 4.000 hours or yearly filter substitution is required.





# NITROWISE 1500



## PERFORMANCE:

Pressure (BAR)	Nitrogen production [m3/h]	Air consumption [m3/h]
6	61.5	144
7	72.9	168
8	84.3	189

## DIMENSIONS:

Width	cm	*95
Depth	cm	92
Height	cm	194
Weight	kg	340

\*This dimension do not include the external filters and the heating pipe

Power Consumption	1.2kW
Rated Volatege	230V
Frequency	50Hz

Nitrowise pipe allows to heat up the flow up 70°C  
Ionizator allows to charge the flow up 25kV

## CONNECTIONS:

- Inlet size 1" Female
- Outlet size 13mm (rubber pipe 13-19mm)
- Electrical connection with Type F plug (Schuko plug)
- LAN port

## MAINTENANCE:

Each 4.000 hours or yearly filter substitution is required.





# NITROWISE 2000



## PERFORMANCE:

Pressure (BAR)	Nitrogen production [m3/h]	Air consumption [m3/h]
6	82	192
7	97.2	224
8	112.4	252

## DIMENSIONS:

Width	cm	*95
Depth	cm	92
Height	cm	194
Weight	kg	350

\*This dimension do not include the external filters and the heating pipe

Power Consumption	1.2kW
Rated Volatege	230V
Frequency	50Hz

Nitrowise pipe allows to heat up the flow up 70°C  
Ionizator allows to charge the flow up 25kV

## CONNECTIONS:

- Inlet size 1" Female
- Outlet size 13mm (rubber pipe 13-19mm)
- Electrical connection with Type F plug (Schuko plug)
- LAN port

## MAINTENANCE:

Each 4.000 hours or yearly filter substitution is required.





# NITROWISE 3000



## PERFORMANCE:

Pressure (BAR)	Nitrogen production [m3/h]	Air consumption [m3/h]
6	120	276
7	154	348
8	178	399

## DIMENSIONS:

Width	cm	* 104
Depth	cm	84
Height	cm	194
Weight	kg	450

\*This dimension do not include the external filters and the heating pipe

Power Consumption	1.2kW
Rated Volatege	230V
Frequency	50Hz

Nitrowise pipe allows to heat up the flow up 70°C  
Ionizator allows to charge the flow up 25kV

## CONNECTIONS:

- Inlet size 1" Female
- Outlet size 13mm (rubber pipe 13-19mm)
- Electrical connection with Type F plug (Schuko plug)
- LAN port

## MAINTENANCE:

Each 4.000 hours or yearly filter substitution is required.





# NITROWISE 4000



## PERFORMANCE:

Pressure (BAR)	Nitrogen production [m3/h]	Air consumption [m3/h]
6	171	445
7	201	523
8	221	576

## DIMENSIONS:

Width	cm	*104
Depth	cm	84
Height	cm	194
Weight	kg	500

\*This dimension do not include the external filters and the heating pipe

Power Consumption	1.2kW
Rated Volatege	230V
Frequency	50Hz

Nitrowise pipe allows to heat up the flow up 70°C  
Ionizator allows to charge the flow up 25kV

## CONNECTIONS:

- Inlet size 1" 1/2 Female
- Outlet size 13mm (rubber pipe 13-19mm)
- Electrical connection with Type F plug (Schuko plug)
- LAN port

## MAINTENANCE:

Each 4.000 hours or yearly filter substitution is required.



# WHY USE EGUCHI IWAO

We engage with paint manufacturers, automotive plants, independent producers or industry representatives in order to create a functional working experience for our customers through these relationships.

We will always guide you through choosing the best brands and products that satisfy your requirements, find application solutions in accordance with your process layout and environmental rules and troubleshoot any issue that may arise, ensuring collective growth and improvement.

- PRODUCT SOURCING
- PROCESS IMPROVEMENT PROGRAMS
- COST REDUCTION
- INVENTORY MANAGEMENT AND SUPPLY
- QUALITY ASSURANCE
- TECHNICAL TRAINING
- COMMERCIAL ANALYSIS & REPORTING
- WASTE MANAGEMENT
- CONSULTING SERVICES



**SCAN THE QR CODE TO CALL OUR SALES TEAM**





**Eguchi Iwao Europe**

Banbury Office  
Suite 4, The Granary, Upton Estate  
Home Farm Drive, Banbury,  
Oxfordshire,  
OX15 6HU  
[orderseu@eguchi-iwao.com](mailto:orderseu@eguchi-iwao.com)  
[+44 \(0\) 3301 289](tel:+44(0)3301289)

**Eguchi Iwao South Africa**

Johannesburg Office  
Unit 12 Dawn Park,  
5 Tugela Road,  
Pomona,  
Kempton Park, 1619  
[info@eguchi.co.za](mailto:info@eguchi.co.za)  
[+27\(0\)11 396 1161](tel:+27(0)113961161)

**Eguchi Iwao Europe**

Warehouse  
Orchard Farm Nursery,  
Tysoe Road, Lower Tysoe, Warwickshire,  
CV35 0BU  
Warehouse  
[orderseu@eguchi-iwao.com](mailto:orderseu@eguchi-iwao.com)  
[+44 \(0\) 7720 378 416](tel:+44(0)7720378416)

**360 Supply Solutions**

Unit 12 Dawn Park,  
5 Tugela Road,  
Pomona,  
Kempton Park, 1619  
[admin@360ss.co.za](mailto:admin@360ss.co.za)  
[+27\(0\)11 396 1161](tel:+27(0)113961161)

**Woodfinishes**

Unit 198, Sea King Road, Lynx Industrial Trading  
Estate Yeovil  
BA20 2NZ  
[info@woodfinishes-ltd.co.uk](mailto:info@woodfinishes-ltd.co.uk)  
[+44 1935 432 841](tel:+441935432841)

**Eguchi Iwao South Africa**

Durban Office  
31 Joyner Road, Prospecton, Durban, 4110  
South Africa  
[info@eguchi.co.za](mailto:info@eguchi.co.za)  
[+27\(0\) 319 130 600](tel:+27(0)319130600)

